

## Hand Washing

The official NHS technique illustration is provided below:



### Hand-washing technique with soap and water



1 Wet hands with water



2 Apply enough soap to cover all hand surfaces



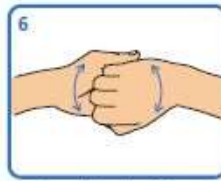
3 Rub hands palm to palm



4 Rub back of each hand with palm of other hand with fingers interlaced



5 Rub palm to palm with fingers interlaced



6 Rub with back of fingers to opposing palms with fingers interlocked



7 Rub each thumb clasped in opposite hand using a rotational movement



8 Rub tips of fingers in opposite palm in a circular motion



9 Rub each wrist with opposite hand



10 Rinse hands with water



11 Use elbow to turn off tap



12 Dry thoroughly with a single-use towel



13 Hand washing should take 15-30 seconds